

SPLIT FLOW



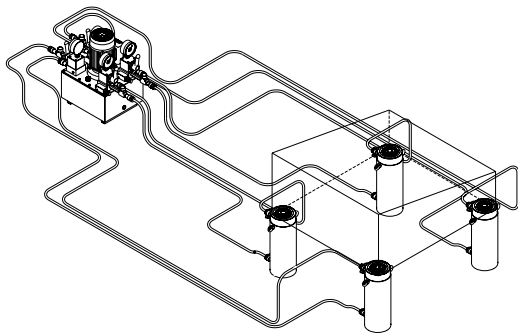
SYNCHRONOUS LIFTING SYSTEMS

POWER PACKS ME##M52GU

FEATURES

The Split Flow hydraulic power packs have two or four independent outlets delivering a constant amount of oil, even if the pressure in each line is not the same. They are equipped with:

- 3-phase electric motor
- pump and tank to be matched with
- 2 or 4 (one for each port) 4-way, 3-position manual control valves with piloted check and 150 bar pressure setting on return B port
- 2 or 4 flow control valves (one for each port) for controlled load lowering
- 2 or 4 pressure gauges (one for each port)



APPLICATIONS

They are an efficient and economic solution particularly suitable for lifting up to a maximum of 4 cylinders with different loads. Since they are based on equal geometrical pressure lines, without any external control on the actual stroke, Split Flow power packs provide for $\pm 3\%$ synchronous lifting with visual control of the operation.

Furthermore, they also allow for synchronous load lowering operations under load when using double acting cylinders.

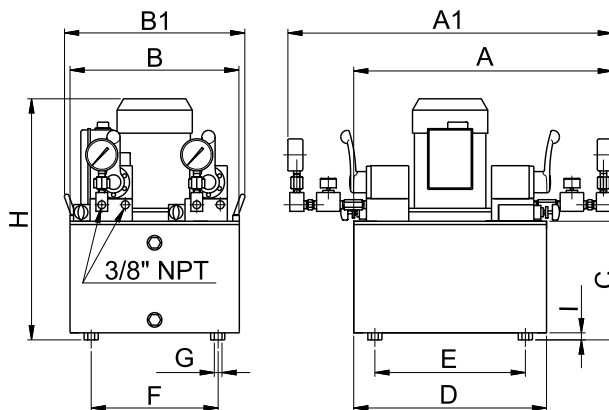


- Reservoir capacity **10 - 40 l**
- Delivery at 700 bar **0,45 - 0,9 l/min**
- Power Rating **2,2 kW**
- Max. pressure **700 bar**



p. 92

When the operation requires an automatic control of the down stroke speed without pressure oscillations and load jumping, we suggest the use of the **VRB38** counterbalance valve.



OPERATIONAL CHARACTERISTICS ACCORDING TO THE CHOSEN PUMP

MODEL	Nu. Outlets	Oil delivery		Pressure		Motor		
		1 st stage	2 nd stage	1 st stage	2 nd stage	Voltage	Power	Speed
		l/min	l/min	bar	bar			
MEM	2	-	0,9	-	700	400V-50Hz	2,2	2800
MEN	2	2,2	-	85				
MEQ	4	-	0,45	-	-			

OPERATIONAL CHARACTERISTIC ACCORDING TO THE CHOSEN TANK

Reservoir capacity	Usable oil	Dimensions mm										
Litres	Litres	A	A1	B	B1	C	D	E	F	G	H	I
10 low	7,7	555	700	360	378	129	410	320	270	M8	410	10
20	17,7				-					257		
40	35,8	570		600			440	350	510		518	40

MODEL CODING

ME	#	#	M52	G	U
Motor Type	Pump type	Reservoir capacity	Valve type	Pressure Gauge	Unidirectional flow regulator